

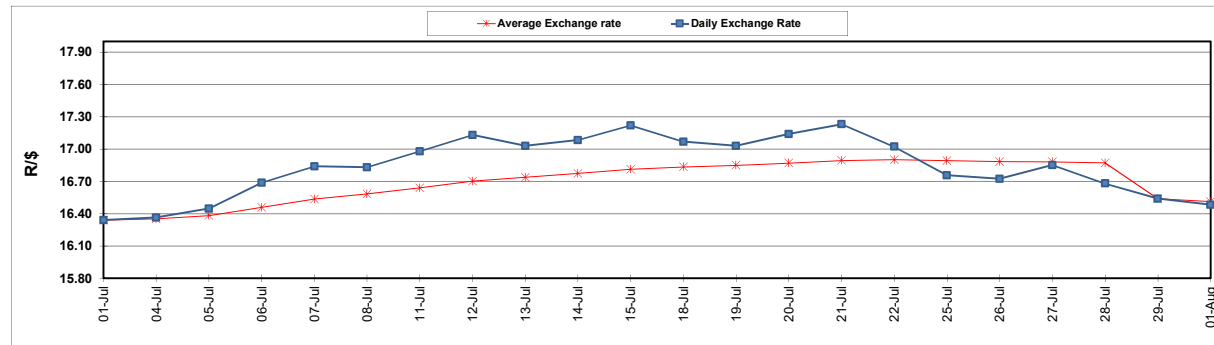
	PETROL 95 ULP	PETROL 93 ULP & LRP	DIESEL 0.05%	DIESEL 0.005%	ILL. PAR.
GAUTENG PUMP PRICE (SA c/l) AS FROM 03/08/2022	2,542.000	2,499.000	-	-	-
WHOLESALE PRICE (SA c/l) AS FROM 03/08/2022	-	-	2,452.440	2,461.840	1,842.288
SINGLE NATIONAL MAXIMUM RETAIL PRICE	-	-	-	-	2,431.000
BASIC FUEL PRICE - 01/08/2022 (SA c/l)	1,325.784	1,295.371	1,444.998	1,453.567	1,511.548
PRESS RELEASE CONTRIBUTION TO BFP 29/07/2022 - 01/08/2022 (SA c/l)	1,689.410	1,646.410	1,763.630	1,776.030	1,768.128
UNIT OVER/(UNDER) RECOVERY - 01/08/2022 (SA c/l)	363.626	351.039	318.632	322.463	256.580
AVERAGE BASIC FUEL PRICE 29/07/2022 - 01/08/2022	1,352.748	1,321.416	1,478.184	1,485.364	1,539.738
AVERAGE UNIT OVER/(UNDER) RECOVERY 29/07/2022 - 01/08/2022	336.662	324.995	285.447	290.667	228.391

ANALYSIS MOVEMENT OF AVERAGE OVER/(UNDER) RECOVERY

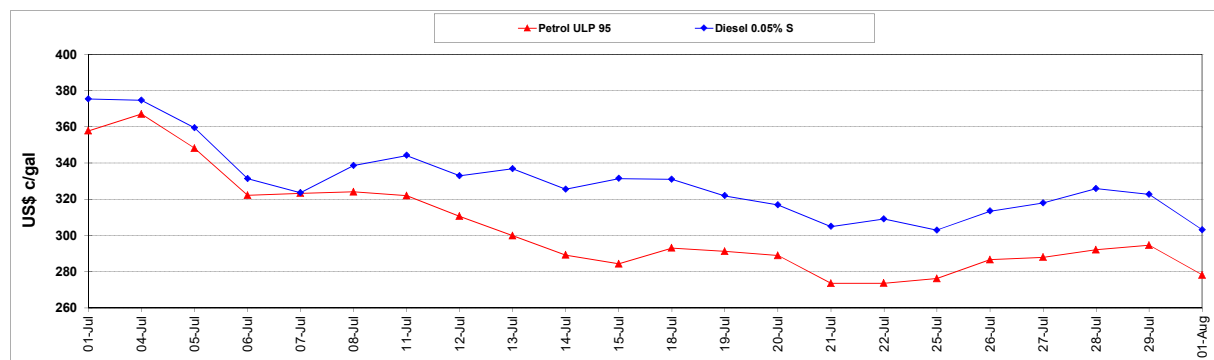
	PETROL 95	PETROL 93	DIESEL 0.05%	DIESEL 0.005%	ILL. PAR.
- MOVEMENT IN INTERNATIONAL PRODUCT PRICES	307.160	296.176	253.209	258.272	194.810
- MOVEMENT IN EXCHANGE RATE	29.502	28.818	32.237	32.394	33.580
AVERAGE UNIT OVER/(UNDER) RECOVERY 29/07/2022 - 01/08/2022	336.662	324.995	285.447	290.667	228.391

R/\$ EXCHANGE RATE - (R/\$16.4835 - 01/08/2022)

EXCHANGE RATE USED IN BASIC FUEL PRICE



INTERNATIONAL PRODUCT PRICES OF BASKET USED IN BASIC FUEL PRICE



BASIC FUEL PRICE IN SA CENTS PER LITRE

